



AltCtrl FW Series

AC-FW0514VP QUICK START GUIDE

Version: 1.0.101004
ReleaseDate: 2010 / 10 / 04



AC-FW0514VP QUICK START GUIDE

A. Before you start

Please check the package content:

1. Main Unit : AC-FW0514VP
2. RJ45 Lan cable
3. Power Adaptor
4. User Manual (CD)
5. Quick Start Guide
6. Warranty Card
7. Wireless Antenna

B. Setup AC-FW0514VP device before networking

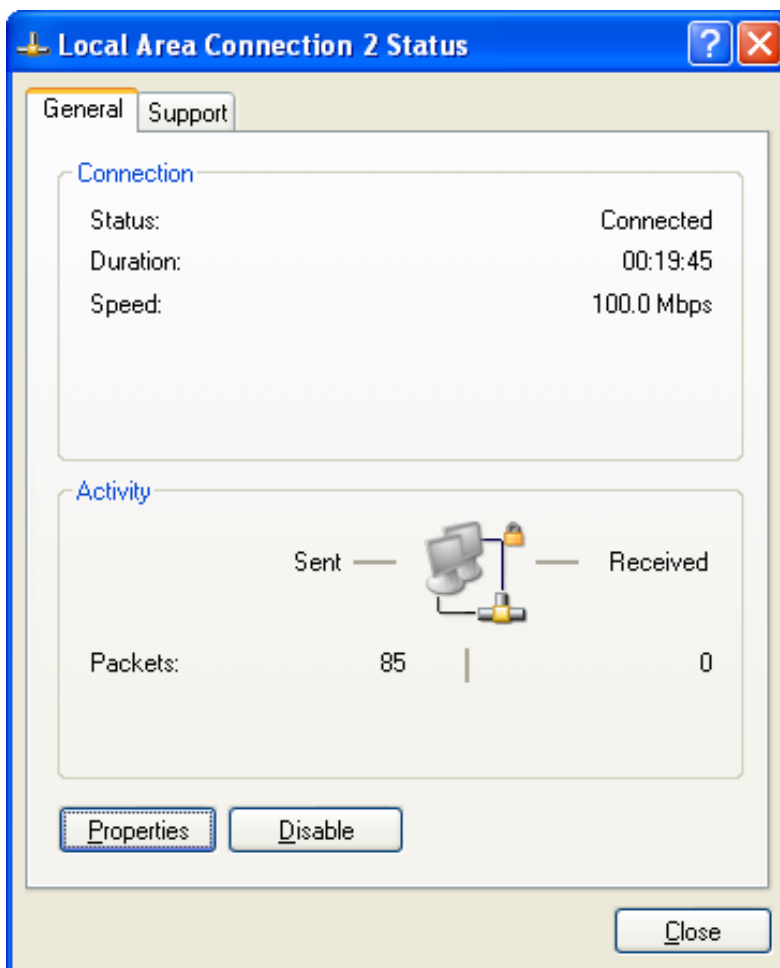
1. Power the AC-FW0514VP device by power adaptor.
2. Connect WAN to the Internet and then connect LAN to your networking devices.



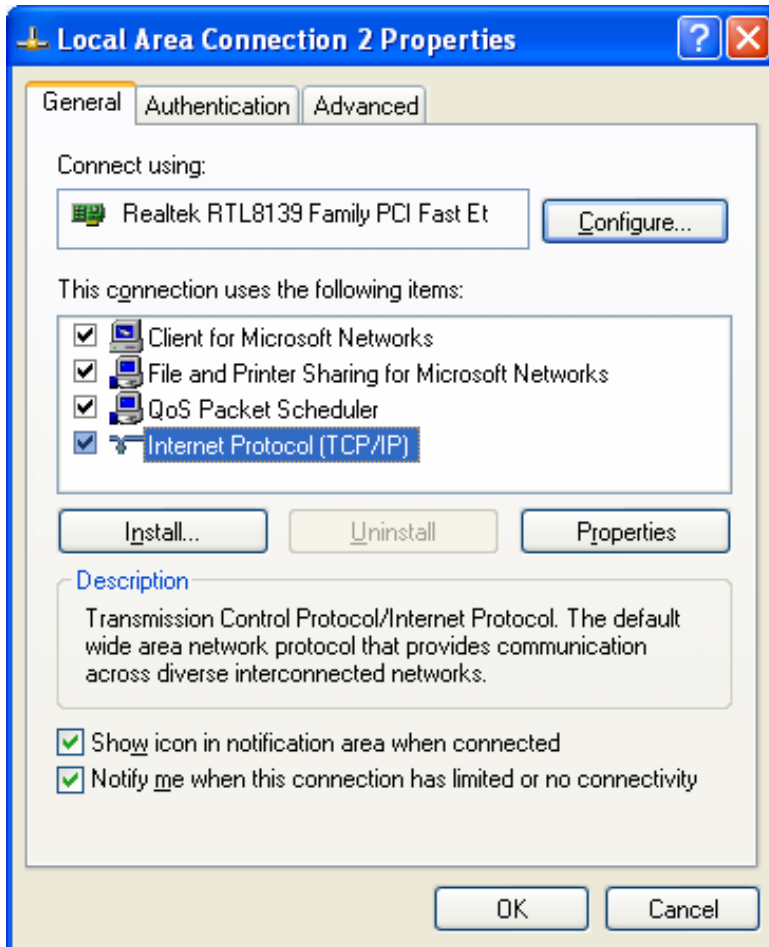
C. Configure your computer

❖ Windows XP configuration:

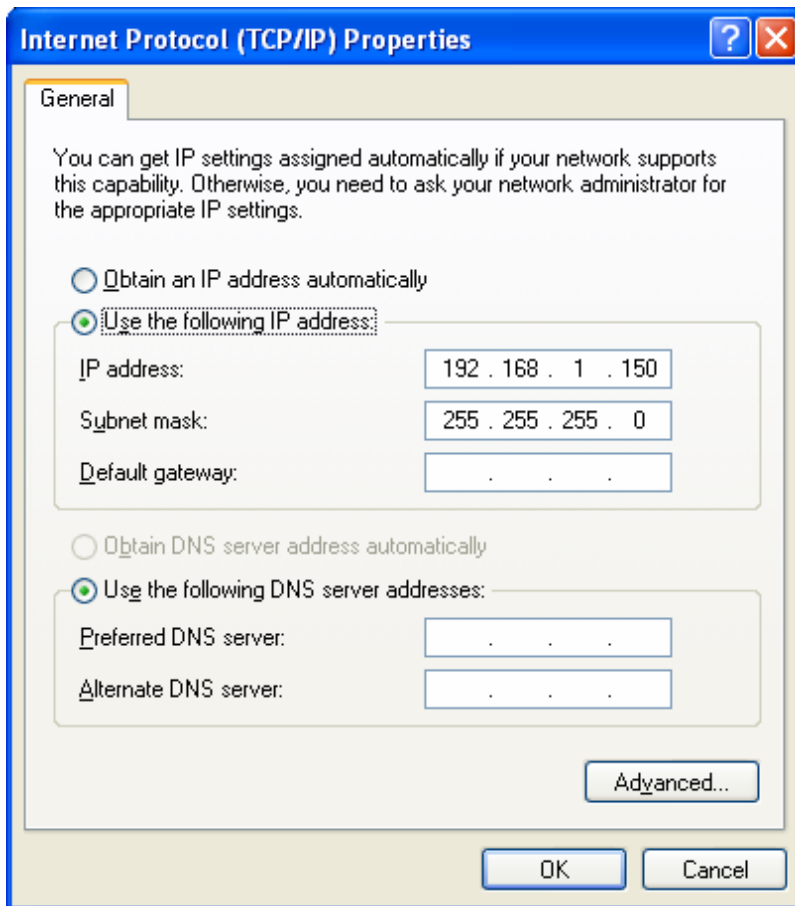
1. Click “**Start / Settings / Control Panel**” (or “**Start / Control Panel**”).
2. Click “**Network and Internet Connections**”.
3. Click “**Network Connection**”
4. Double-click “**Local Area Connection**”.



5. Click the “**Properties**” button.



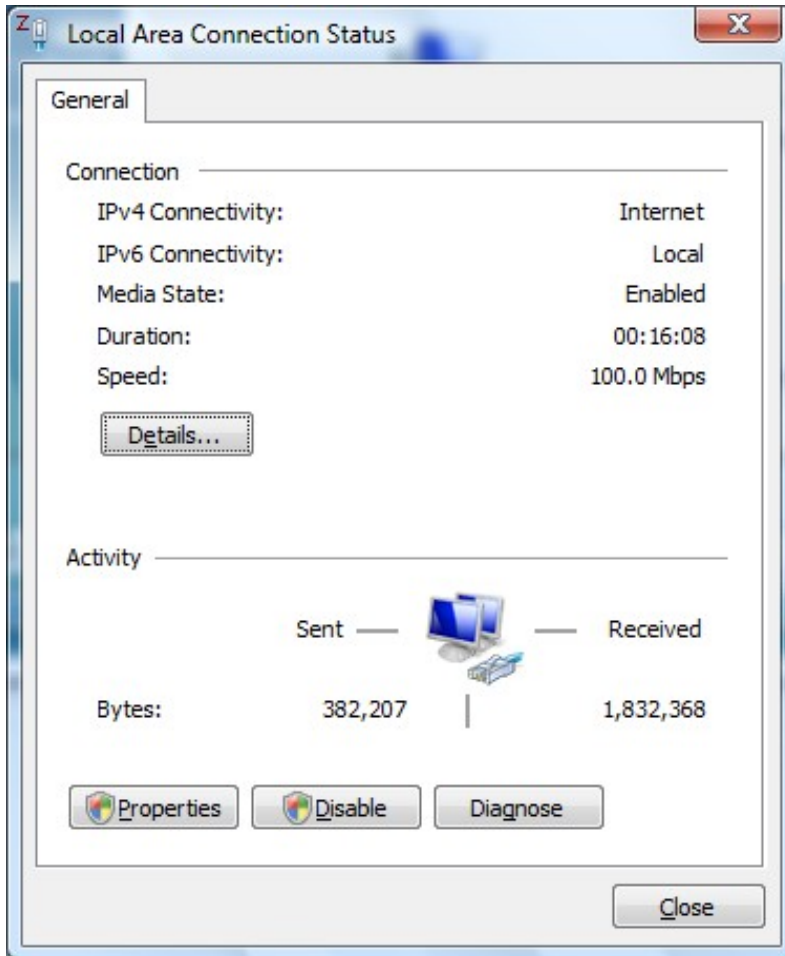
6. Ensure the box next to “**Internet Protocol (TCP / IP)**” is selected.
7. Click to highlight “**Internet Protocol (TCP / IP)**” and click the “**Properties**” button.



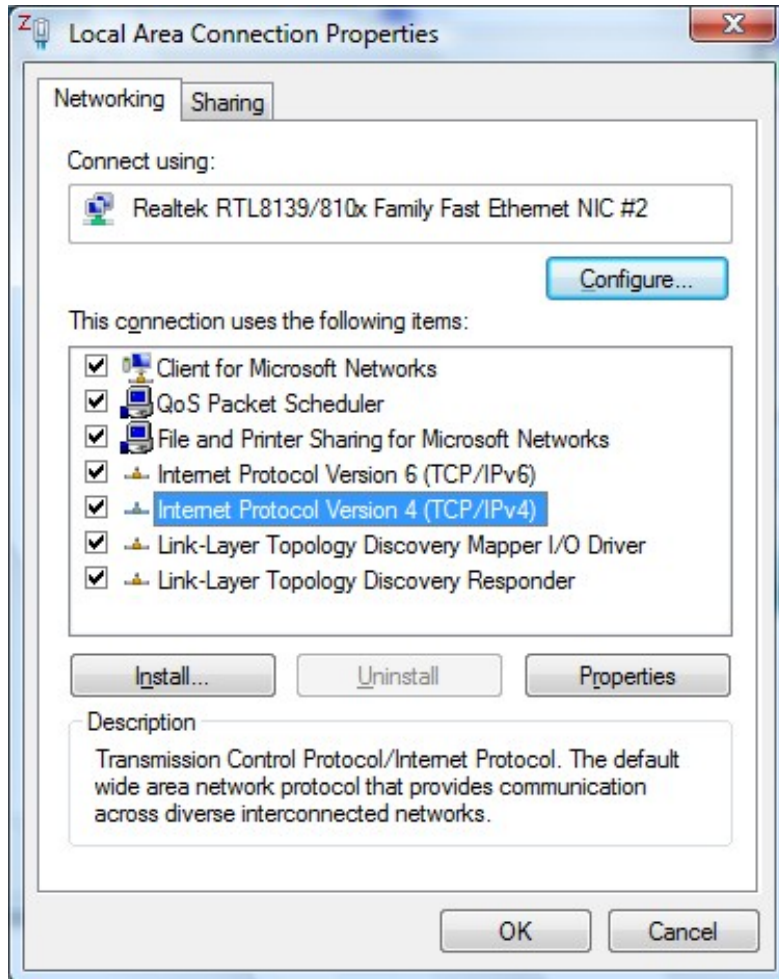
8. Select “Use the following IP address”, and enter IP address: **192.168.1.150***, Subnet mask: **255.255.255.0**. Click **OK** twice to exit and save your settings.
(* You can enter 192.168.1.2 ~ 192.168.1.254 as long as there is no IP conflict.)
9. You can also select “Obtain an IP address automatically” and click **OK** to save your settings.

❖ Windows Vista configuration:

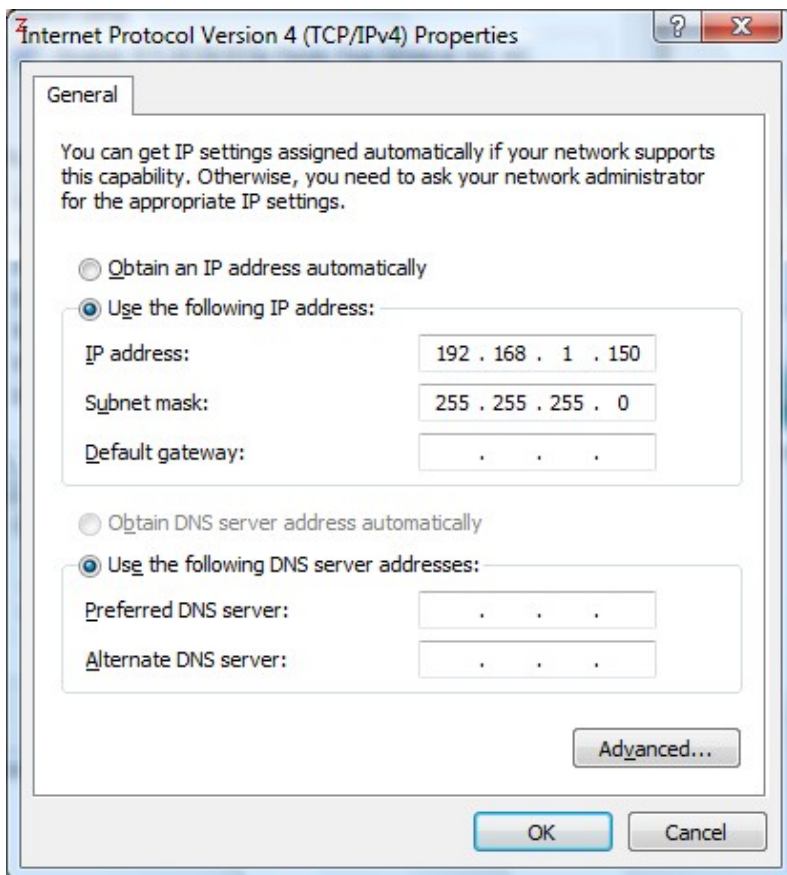
1. Click “**Start / Settings / Control Panel**” (or “**Start / Control Panel**”).
2. Click “**Network and Internet**”.
3. Click “**Network and Sharing Center**”.
4. Click “**Manage network connections**”.
5. Double-click “**Local Area Connection**”.



6. Click the “**Properties**” button.



7. Ensure the box next to “**Internet Protocol Version 4 (TCP / IP v4)**” is selected.
8. Click to highlight “**Internet Protocol Version 4 (TCP / IP v4)**” and click the “**Properties**” button.

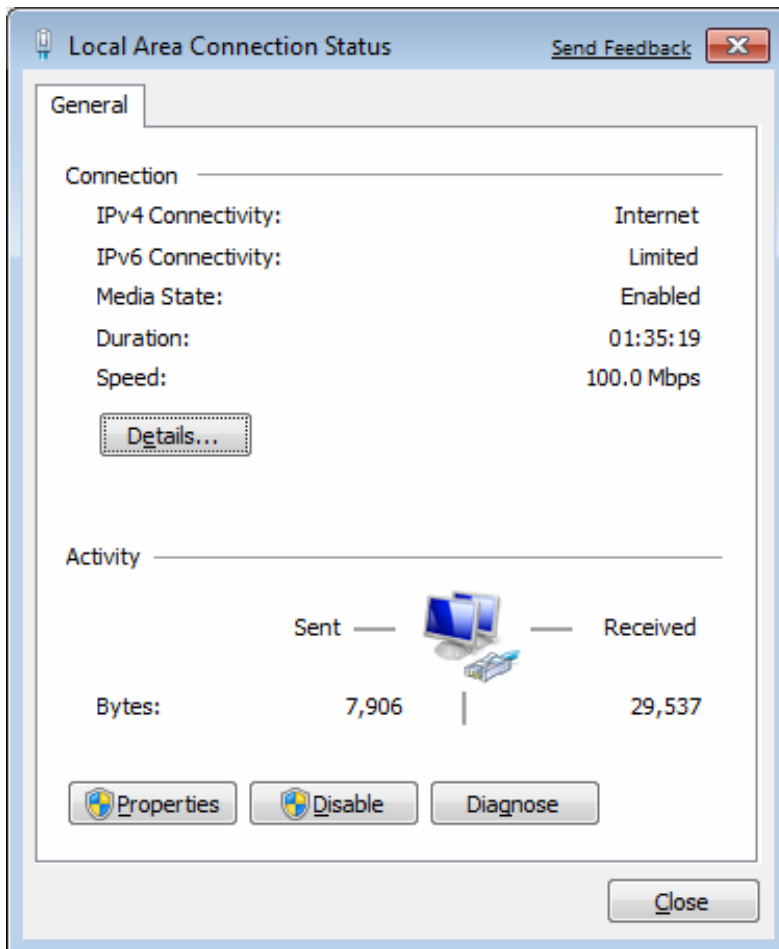


9. Select “**Use the following IP address**”, and enter IP address: **192.168.1.150***, Subnet mask: **255.255.255.0**. Click **OK** twice to exit and save your settings.
(* You can enter 192.168.1.2 ~ 192.168.1.254 as long as there is no IP conflict.)

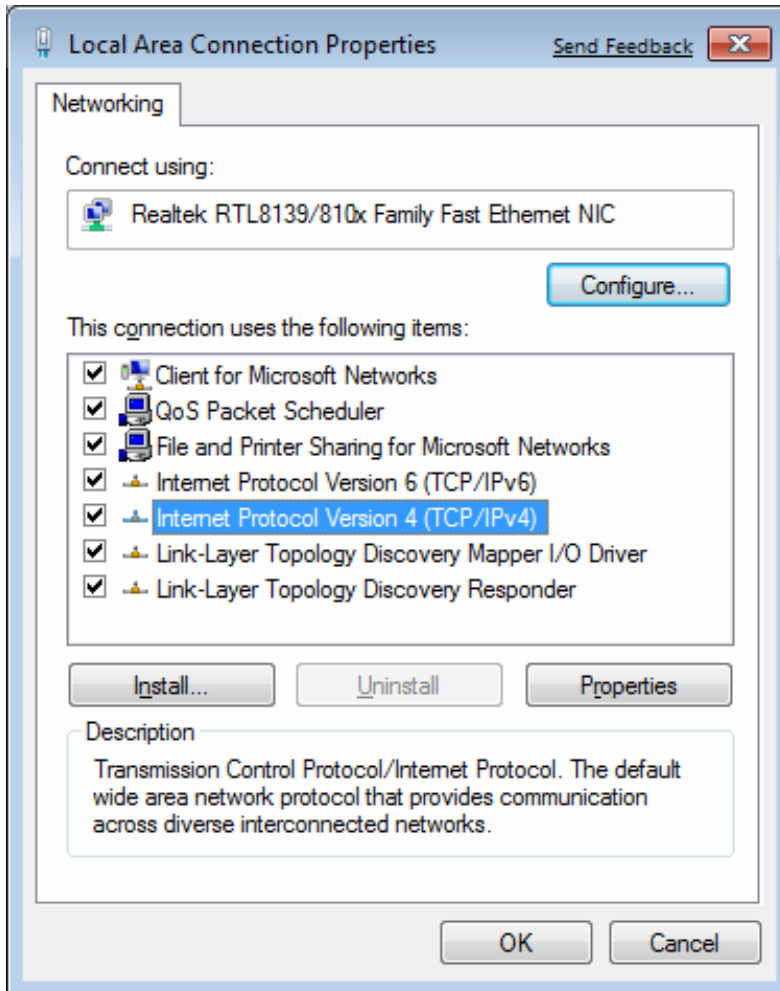
10. You can also select “**Obtain an IP address automatically**” and click **OK** to save your settings.

❖ Windows 7 configuration:

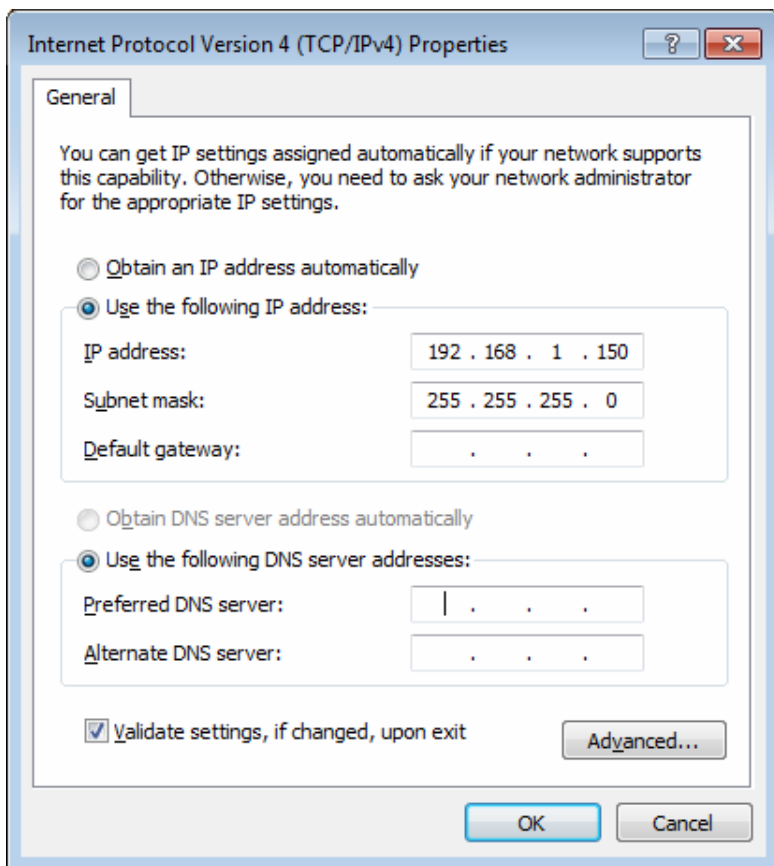
1. Click “**Start / Settings / Control Panel**” (or “**Start / Control Panel**”).
2. Click “**Network and Internet**”.
3. Click “**Network and Sharing Center**”.
4. Click “**Change adapter settings**”.
5. Double-click “**Local Area Connection**”.



6. Click the “**Properties**” button.



7. Ensure the box next to “**Internet Protocol Version 4 (TCP / IPv4)**” is selected.
8. Click to highlight “**Internet Protocol Version 4 (TCP / IPv4)**” and click the “**Properties**” button.



9. Select “**Use the following IP address**”, and enter IP address: **192.168.1.150***, Subnet mask: **255.255.255.0**. Click **OK** twice to exit and save your settings.
(* You can enter 192.168.1.2 ~ 192.168.1.254 as long as there is no IP confliction.)

10. You can also select “**Obtain an IP address automatically**” and click **OK** to save your settings.

D. Log in AC-FW0514VP

This section will show you how to configure **AC-FW0514VP** by using the web-based configuration utility. Please be noted that the best supporting browsers are IE7, IE8 and Firefox 3.x. (IE6 and Firefox 2.x are not supported).

1. To access the configuration utility, open a web browser and enter:

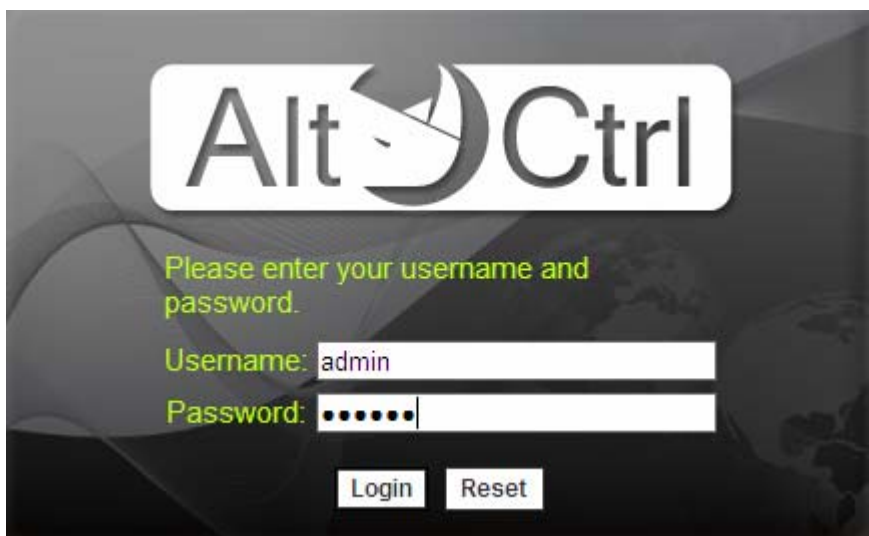
http://192.168.1.1 (or: **192.168.1.1**)



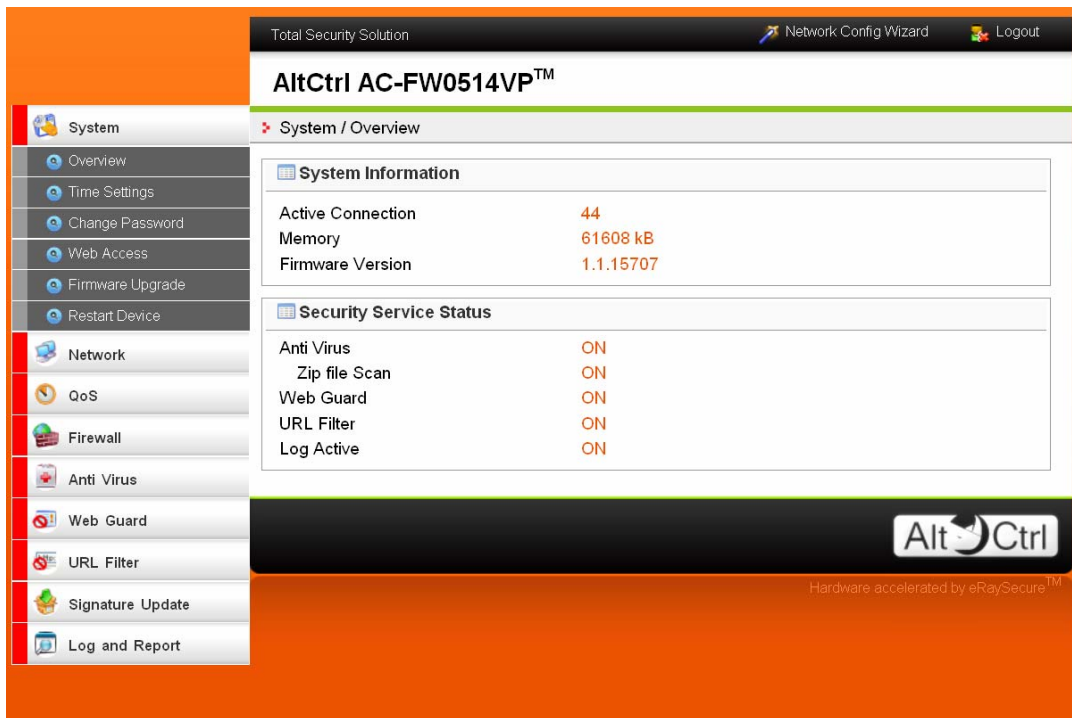
Once the log in page successfully appeared, please continue to enter username and password. For the first time, please select your language.

Username: admin

Password: 123456



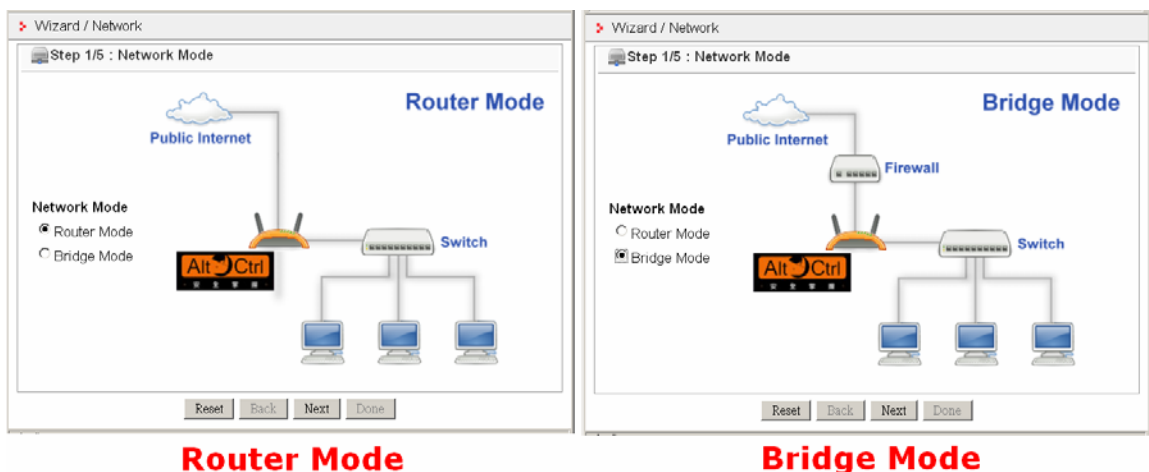
E. Confirm Security Functions are Enabled



F. Start “Network Config Wizard”

1. You can click the " Network Config Wizard" to start Wizard with five steps.
2. **Step 1/5 : Choose “Network Mode”.**

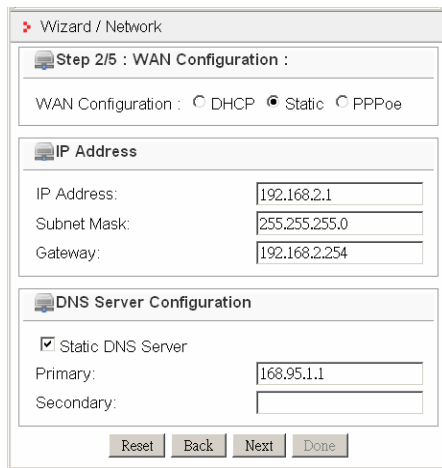
You can choose “Router Mode” or “Bridge Mode”.



3. Step 2/5 : WAN/Bridge IP Configuration :

In "Router Mode", you can select "DHCP", "Static" or "PPPoE" for the WAN IP.

In "Bridge Mode", you can select "DHCP" or "Static" for the Bridge IP.



Wizard / Network

Step 2/5 : WAN Configuration :

WAN Configuration : DHCP Static PPPoE

IP Address

IP Address:

Subnet Mask:

Gateway:

DNS Server Configuration

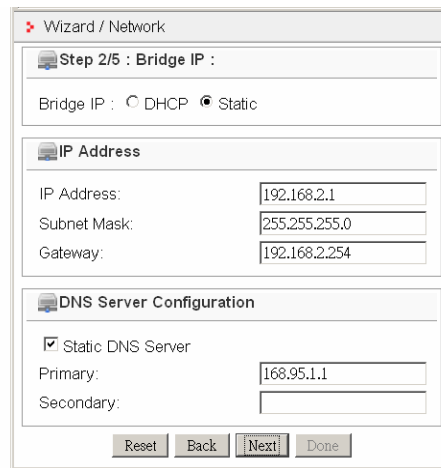
Static DNS Server

Primary:

Secondary:

Reset Back Next Done

Router Mode



Wizard / Network

Step 2/5 : Bridge IP :

Bridge IP : DHCP Static

IP Address

IP Address:

Subnet Mask:

Gateway:

DNS Server Configuration

Static DNS Server

Primary:

Secondary:

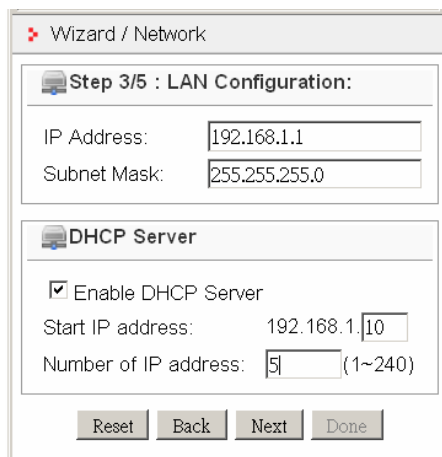
Reset Back Next Done

Bridge Mode

4. Step 3/5 : LAN/Management IP Configuration:

In "Router Mode", you can "Enable DHCP Server" for the LAN.

In "Bridge Mode", you can access AC-FW0514VP with "Management IP" even in the "DHCP" client for the WAN.



Wizard / Network

Step 3/5 : LAN Configuration:

IP Address:

Subnet Mask:

DHCP Server

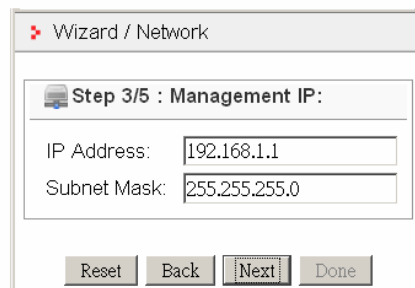
Enable DHCP Server

Start IP address:

Number of IP address: (1~240)

Reset Back Next Done

Router Mode



Wizard / Network

Step 3/5 : Management IP:

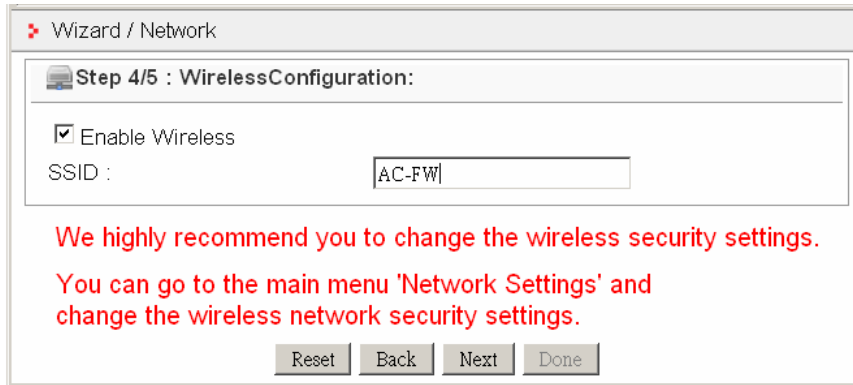
IP Address:

Subnet Mask:

Reset Back Next Done

Bridge Mode

5. Step 4/5 : Wireless Configuration:



Wizard / Network

Step 4/5 : WirelessConfiguration:

Enable Wireless

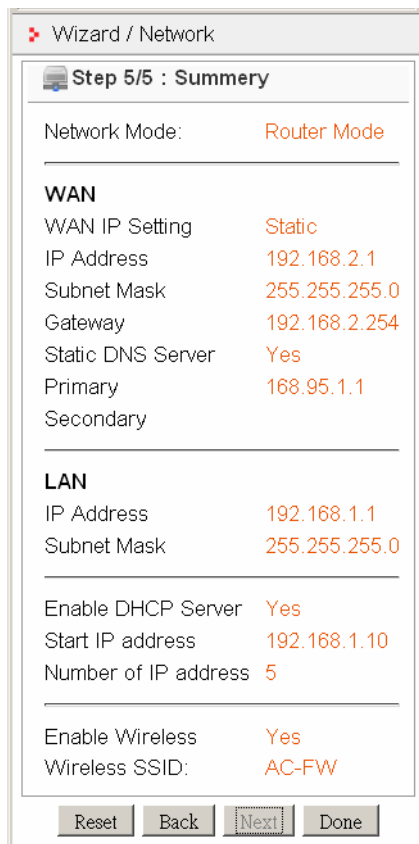
SSID :

We highly recommend you to change the wireless security settings.

You can go to the main menu 'Network Settings' and change the wireless network security settings.

Reset Back Next Done

6. Step 5/5 : Summery



Wizard / Network

Step 5/5 : Summery

Network Mode: Router Mode

WAN

WAN IP Setting Static

IP Address 192.168.2.1

Subnet Mask 255.255.255.0

Gateway 192.168.2.254

Static DNS Server Yes

Primary 168.95.1.1

Secondary

LAN

IP Address 192.168.1.1

Subnet Mask 255.255.255.0

Enable DHCP Server Yes

Start IP address 192.168.1.10

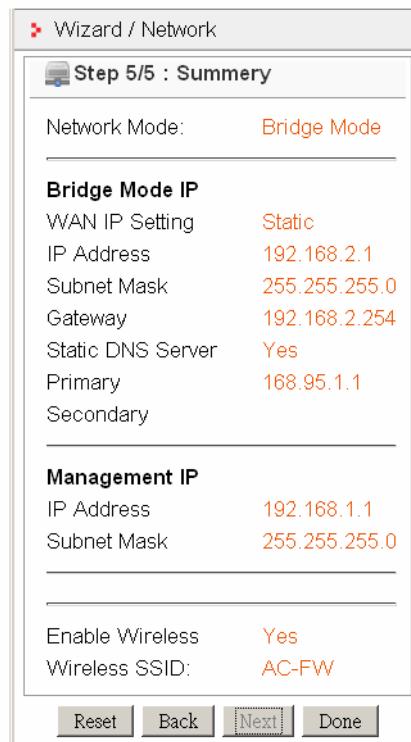
Number of IP address 5

Enable Wireless Yes

Wireless SSID: AC-FW

Reset Back Next Done

Router Mode



Wizard / Network

Step 5/5 : Summery

Network Mode: Bridge Mode

Bridge Mode IP

WAN IP Setting Static

IP Address 192.168.2.1

Subnet Mask 255.255.255.0

Gateway 192.168.2.254

Static DNS Server Yes

Primary 168.95.1.1

Secondary

Management IP

IP Address 192.168.1.1

Subnet Mask 255.255.255.0

Enable Wireless Yes

Wireless SSID: AC-FW

Reset Back Next Done

Bridge Mode

G. Logout and Start Using AC-FW0514VP